

## DFA US Targeted Value I (DFFVX)

### Fund Objective

The investment seeks long-term capital appreciation. The fund purchases a broad and diverse group of the readily marketable securities of U.S. small and mid cap companies that the advisor determines to be value stocks with higher profitability. It may purchase or sell futures contracts and options on futures contracts for U.S. equity securities and indices, to increase or decrease equity market exposure based on actual or expected cash inflows to or outflows from the fund.

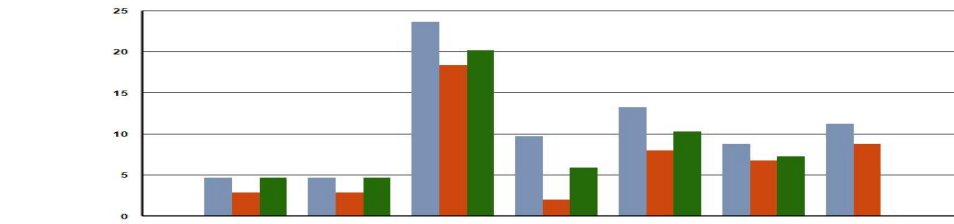
### Portfolio Data

Universe	Open-Ended
Peer Group	Small Value
Investment Vehicle ID	FOUSA02VMM
Strategy Inception	02-23-2000
Share Class Inception	02-23-2000
Calculation Index	iShares Russell 2000 Value ETF
Manager Structure	Team
Lead Manager	Team
Manager Tenure	12
Strategy Assets	\$13.47b
Share Class Assets	\$13.47b / 100.00%
Avg Market Cap	\$3.22b
Closed New Inv	-
Closed All Inv	-
Min Investment	\$0
Turnover	20%
P/E	11.34
P.B.	1.19

### Expense Data

Prospectus Net / Gross	0.29% / 0.30%
Cat Avg Exp Ratio Net / Gross	1.29% / 2.34%
Expense Rank Net / Gross	6% / 4%
12b-1 Fees	0.00%
Waiver Amount	-
Waiver Exp Date	02/28/2025

### Annualized Total Returns



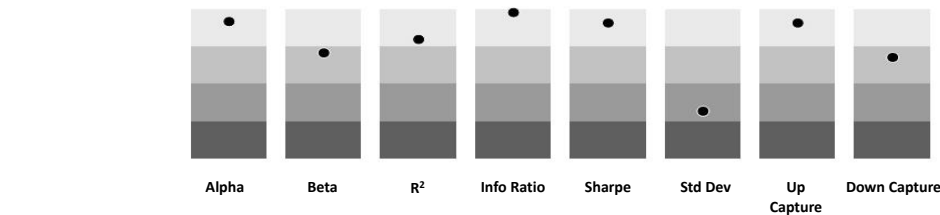
	QTR	YTD	1 YEAR	3 YEAR	5 YEAR	10 YEAR	SINCE INCEPTION
DFFVX	4.63	4.63	23.64	9.72	13.19	8.77	11.21
Calculation Index	2.82	2.82	18.35	1.99	7.95	6.72	8.72
Category Average	4.66	4.66	20.14	5.90	10.28	7.23	-
Rank in Category	53%	53%	20%	9%	10%	16%	-
Category Size	497	497	489	457	426	335	-

Performance data quoted represents past performance. Past performance does not guarantee future results. Investment return and principal value will fluctuate so that an investor's shares, when redeemed, may be worth more or less than their original cost. Current performance may be lower or higher than the performance quoted. To obtain current month-end performance information, please contact your plan advisor.

### Calendar Year Return (%)

	2019	2020	2021	2022	2023
DFFVX	21.47	3.77	38.80	(4.62)	19.31
Calculation Index	22.17	4.50	27.96	(14.67)	14.42
Category Average	21.43	4.02	31.57	(10.16)	16.86
Rank in Category	56%	48%	8%	13%	25%
Category Size	419	416	446	481	489

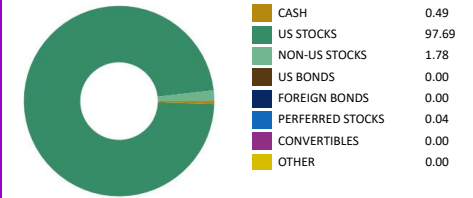
### 3 Year Risk Quartile Charts



100

As of: 03/31/2024

### Asset Allocation (%)



### Sector Weighting

	DFFVX	Category Average
% BASIC MATERIALS	7.69	6.21
% CONSUMER CYCLICAL	17.10	14.26
% FINANCIAL SERVICES	25.99	22.35
% REAL ESTATE	1.18	5.66
% CONSUMER DEFENSIVE	4.91	3.95
% HEALTHCARE	5.39	5.36
% UTILITIES	0.41	2.48
% COMMUNICATION SERVICES	2.26	1.74
% ENERGY	9.24	7.51
% INDUSTRIALS	16.46	17.31
% TECHNOLOGY	8.83	9.30

### Top Ten Holding (%)

Amkor Technology Inc	0.55
Arrow Electronics Inc	0.50
HF Sinclair Corp	0.62
Knight-Swift Transportation Holdings Inc Class A	0.53
Penske Automotive Group Inc	0.52
Taylor Morrison Home Corp	0.48
Toll Brothers Inc	0.98
United States Steel Corp	0.57
Unum Group	0.60
<b>% Assets in Top 10</b>	<b>5.35</b>