

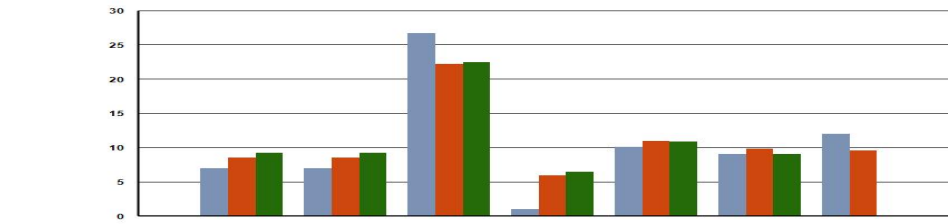
# Fidelity Extended Market Index (FSMAX)

As of: 03/31/2024

### Fund Objective

The investment seeks to provide investment results that correspond to the total return of stocks of mid- to small-capitalization United States companies. The fund normally invests at least 80% of assets in common stocks included in the Dow Jones U.S. Completion Total Stock Market Index, which represents the performance of stocks of mid- to small-capitalization U.S. companies. The manager uses statistical sampling techniques based on such factors as capitalization, industry exposures, dividend yield, price/earnings (P/E) ratio, price/book (P/B) ratio, and earnings growth to attempt to replicate the returns of the index.

### Annualized Total Returns



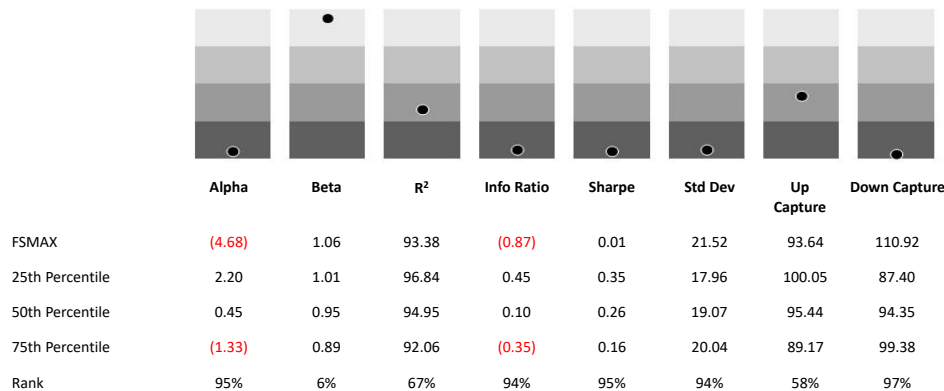
	QTR	YTD	1 YEAR	3 YEAR	5 YEAR	10 YEAR	SINCE INCEPTION
FSMAX	6.98	6.98	26.69	0.97	10.10	8.99	12.00
Calculation Index	8.55	8.55	22.16	5.90	10.93	9.78	9.56
Category Average	9.21	9.21	22.48	6.45	10.89	8.99	-
Rank in Category	83%	83%	18%	95%	70%	45%	-
Category Size	438	438	423	392	360	252	-

Performance data quoted represents past performance. Past performance does not guarantee future results. Investment return and principal value will fluctuate so that an investor's shares, when redeemed, may be worth more or less than their original cost. Current performance may be lower or higher than the performance quoted. To obtain current month-end performance information, please contact your plan advisor.

### Calendar Year Return (%)

	2019	2020	2021	2022	2023
FSMAX	28.00	32.16	12.41	(26.43)	25.37
Calculation Index	30.31	16.91	22.38	(17.43)	17.07
Category Average	26.21	12.39	23.40	(14.01)	16.00
Rank in Category	51%	4%	97%	97%	9%
Category Size	404	407	391	405	420

### 3 Year Risk Quartile Charts



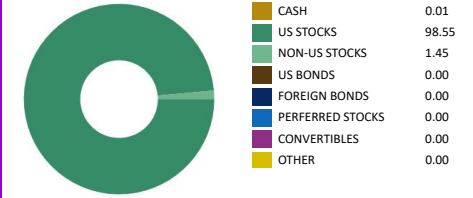
### Portfolio Data

Universe	Open-Ended
Peer Group	Mid-Cap Blend
Investment Vehicle ID	F00000MJRH
Strategy Inception	09-08-2011
Share Class Inception	09-08-2011
Calculation Index	iShares Russell Mid-Cap ETF
Manager Structure	Team
Lead Manager	Team
Manager Tenure	15
Strategy Assets	\$39.85b
Share Class Assets	\$39.85b / 100.00%
Avg Market Cap	\$7.12b
Closed New Inv	-
Closed All Inv	-
Min Investment	\$0
Turnover	18%
P/E	17.86
P.B.	2.23

### Expense Data

Prospectus Net / Gross	0.04% / 0.04%
Cat Avg Exp Ratio Net / Gross	1.06% / 1.76%
Expense Rank Net / Gross	3% / 2%
12b-1 Fees	0.00%
Waiver Amount	\$63,030
Waiver Exp Date	-

### Asset Allocation (%)



### Sector Weighting

	FSMAX	Category Average
% BASIC MATERIALS	3.86	4.93
% CONSUMER CYCLICAL	11.04	13.48
% FINANCIAL SERVICES	15.07	14.11
% REAL ESTATE	6.03	5.98
% CONSUMER DEFENSIVE	3.17	3.95
% HEALTHCARE	11.71	9.50
% UTILITIES	1.66	3.01
% COMMUNICATION SERVICES	3.90	2.30
% ENERGY	4.38	4.54
% INDUSTRIALS	16.09	18.79
% TECHNOLOGY	23.08	15.80

### Top Ten Holding (%)

Apollo Global Management Inc Class A	0.72
Block Inc Class A	0.65
CrowdStrike Holdings Inc Class A	1.08
Ferguson PLC	0.63
KKR & Co Inc Ordinary Shares	0.96
Marvell Technology Inc	0.91
Palantir Technologies Inc Ordinary Shares - Class A	0.71
Snowflake Inc Ordinary Shares - Class A	0.91
Super Micro Computer Inc	0.59
Workday Inc Class A	0.90
<b>% Assets in Top 10</b>	<b>8.06</b>